

VUKA IMPACT

DESCRIPTION

A solvent free epoxy build up system with coloured quartz aggregate, power trowelled to a nominal thickness from 3mm to 4mm with a decorative tweed appearance.

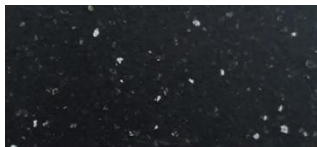
USES

Retail outlets, supermarkets, malls, light manufacturing, food and pharmaceutical processing, educational and correctional facilities, laboratories, ablution blocks, hospitals, automotive and printing facilities, veterinary clinics and the like.

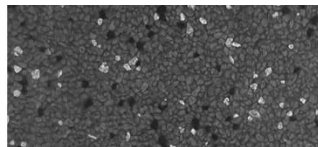
BENEFITS

Aesthetically pleasing choice of blended colours
 Seamless and hygienic, low maintenance
 Excellent chemical & abrasion resistance
 Solvent free, low odour
 Long service life
 Impermeable to liquids

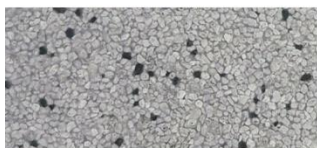
STANDARD COLOURS



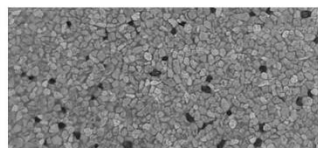
galaxy



ash



titanium



moonshine



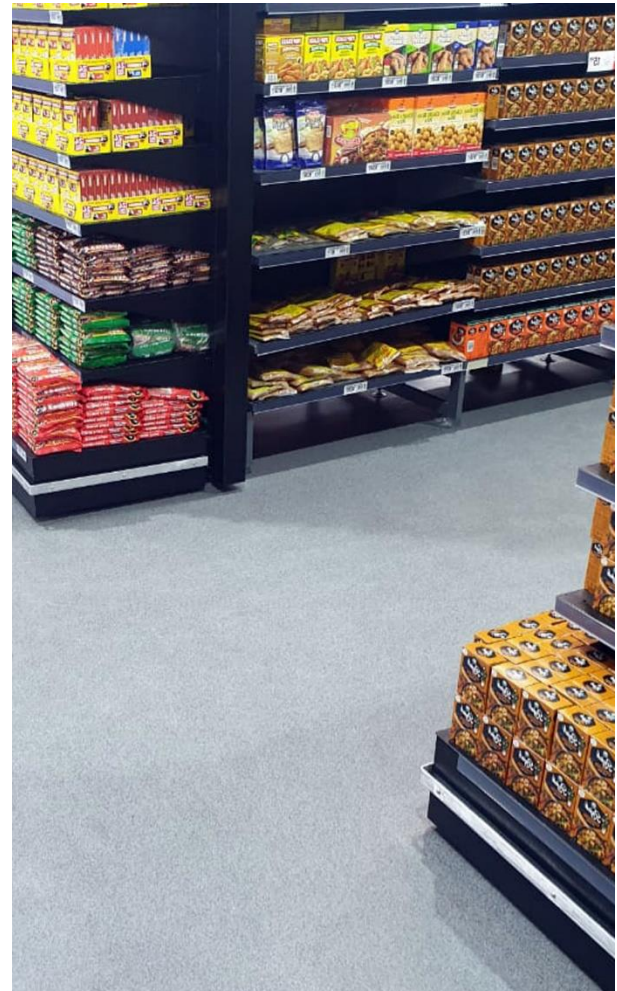
mars



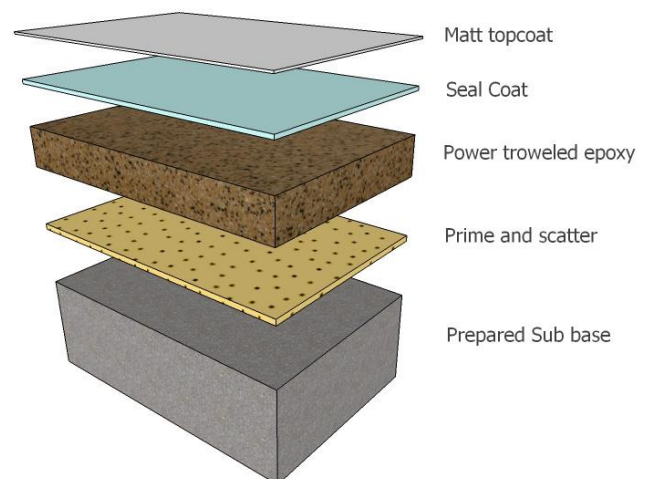
healthy

CHEMICAL RESISTANCE

For chemical resistance information please contact our Technical Department.



ILLUSTRATION



VUKA IMPACT

PROPERTIES

The following are typical properties achieved at 20C and 50% relative humidity.

Light traffic @ 20C	24hrs
Heavy traffic @ 20C	2 Days
Full cure @ 20C	7 Days
Fire Resistance	Class 4 – SANS 10177 : Part 4 : 2005
Slip Resistance	BS EN 13036-4:2011. Typical values for Four-S Rubber. Dry 81 Wet 65
Impact Resistance	ISO6272-1:2011 1kg weight >1.8m 2kg weight >1.5m
Abrasion Resistance	SANS 1149:2012
Thermal Resistance	Tolerant of sustained temperatures of 50 C
Water Permeability	Nil – Contest test. (Impermeable)
Compressive Strength:	>70 N/mm ² SM SABS 863:1994
Flexural Strength:	>25 N/mm ² SM SABS 864:1994
Bond Strength:	Greater than cohesive strength of 25N/mm ² concrete > 1.5 N/mm ² Proceq Dyna
Tensile Strength:	>9 N/mm ² SM SABS 1253:1994

SURFACE REQUIREMENTS

Concrete / Grano surfaces must have a minimum compressive strength of 25N/mm², a minimum tensile strength of 1.5N/mm², be at least 40mm thick. The substrate must be dry, free of oils waxes fats and other contaminants. Vacu-blasting, scarification, abrasive grinding followed by vacuum cleaning is preferred. The surface must show open pores throughout with exposed aggregate. **Acid etching is not acceptable**

INSTALLATION

The installation may only be carried out by a Vuka Floors approved contractor with a documented quality assurance certificate and in accordance with our

detailed application instructions available on request. The use of floor lights is recommended.

CURING

At 25C constant, excessive traffic, aqueous contact and exposure to aggressive chemicals should only take place after 7 days when full cure has been achieved. At 10C constant, full cure would take a minimum of 12 days.

STORAGE

12 Months from date of production if stored in original sealed containers in dry conditions at temperatures between +10C and +30C.

HEALTH AND SAFETY

Use of basic principles of industrial hygiene and protective clothing such as gloves, goggles, masks will enable the product to be used safely. Splashes into eyes should be washed immediately with clear water and medical advice sought.

BILL OF QUANTITY DESCRIPTIONS

Contact Vuka Floors for a detailed bill description to suit your specific requirements.

MODEL SPECIFICATION

Prepare surface and install Vuka Impact solvent free epoxy build-up system at 4mm thickness in strict accordance with the technical data obtainable from Vuka Floors. All work to be done by Vuka Floors approved applicators.

REFERENCE PANEL

A reference sample should be installed by the applicator prior to the start of the contract to ensure correct coverage, workmanship and acceptance by the client as the standard for the project.

FURTHER INFORMATION

This product will change in colour over time. Especially when subject to high levels of UV and or chemical attack. For best colour stability consult our technical department. This does

VUKA IMPACT

not compromise the products physical and chemical resistance characteristics.

Vuka Floors products are guaranteed against defective materials and manufacture and are sold subject to its Terms and Conditions which may not be overridden in any other legal documentation.

Whilst any information contained herein is true, accurate and represents our best knowledge and experience at the date of issuance it is subject to change without prior notice. User must contact Vuka Floors to verify correctness before specifying or ordering. No warranty is given or implied with any recommendations made by us, our representatives or distributors, as the conditions of use and the competence of any labour involved in the application are beyond our control.

Figures given for consumption / spread rates are theoretical and do not allow for additional materials due to surface profile, porosity, variations in level and wastage etc.