

VUKA LUX

DESCRIPTION

Vuka Lux is a decorative slip resistant, solvent free epoxy system encapsulating coloured quartz with a clear epoxy resin 3mm thick.

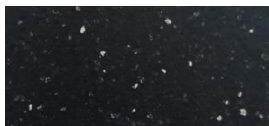
USES

It provides a textured or smooth surface with either a glossy or matt finish. Widely used in hospitals, kitchens, ablution blocks, food & beverage processors, public buildings and stadiums, retail stores and the like.

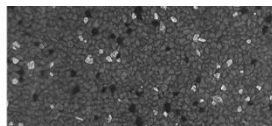
BENEFITS

- Seamless and hygienic finish
- Decorative effect
- Excellent chemical resistance
- Various Anti slip options
- Good abrasion resistance
- Service temperature up to 60 C wet
- Available in a range of standard colours

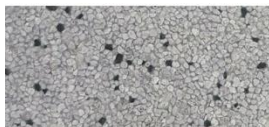
STANDARD COLOURS



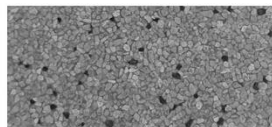
galaxy



ash



titanium



moonshine



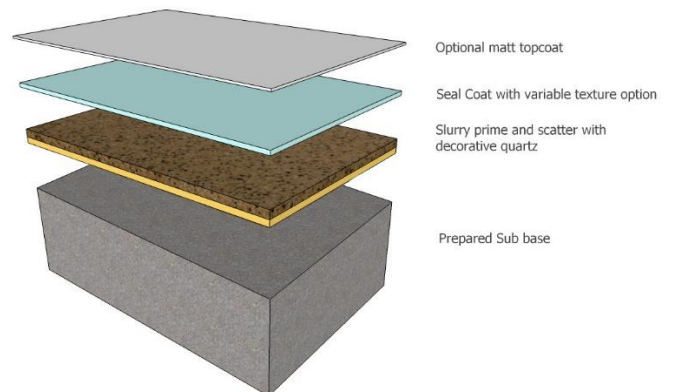
mars



healthy



ILLUSTRATION



CHEMICAL RESISTANCE

For chemical resistance information please contact our Technical Department

VUKA LUX

PROPERTIES

The following are typical properties achieved at 20C and 50% relative humidity

| | |
|-----------------------|--|
| Light traffic @ 20C | 24hrs |
| Heavy traffic @ 20C | 2 Days |
| Full cure @ 20C | 7 Days |
| Fire Resistance | Class 4 – SANS 10177 : Part 4 : 2005 |
| Slip Resistance | BS EN 13036-4:2011. Typical values for Four-S Rubber. Dry 81 Wet 65 |
| Impact Resistance | ISO6272-1:2011 1kg weight >1.8m 2kg weight >1.5m |
| Abrasion Resistance | SANS 1149:2012 |
| Thermal Resistance | Tolerant of sustained temperatures of 50 C |
| Water Permeability | Nil – Contest test. (Impermeable) |
| Compressive Strength: | >70 N/mm ² SM SABS 863:1994 |
| Flexural Strength: | >25 N/mm ² SM SABS 864:1994 |
| Bond Strength: | Greater than cohesive strength of 25N/mm ² concrete > 1.5 N/mm ² Proceq Dyna |
| Tensile Strength: | >9 N/mm ² SM SABS 1253:1994 |

SURFACE REQUIREMENTS

Concrete / Grano surfaces must have a minimum compressive strength of 25N/mm², a minimum tensile strength of 1.5N/mm², be at least 40mm thick. The substrate must be dry, free of oils waxes fats and other contaminants. Vacu-blasting, scarification, abrasive grinding followed by vacuum cleaning is preferred. The surface must show open pores throughout with exposed aggregate. **Acid etching is not acceptable.**

MIXING

Pack components are pre-weighed for optimum performance – never split or proportion a kit. Mix kits for 3 minutes using a slow speed 300rpm stirrer.

APPLICATION

- 1 Prime with Vuka Prime 102 Slurry at 0.65L/m²
- 2 Blind wet resin with coloured aggregate at 3 to 3.5kg/m² and allow to cure
- 3 Sweep off unbound quartz and denib with steel trowel. Apply top coat as required below.

Medium Texture (Apply by flexible rubber squeegee)
Vuka Seal Coat at 0.4 to 0.6L/m²

Fine texture (Apply by steel float or firm squeegee)
Vuka Seal Coat at 0.7 to 0.9L/m²

OPTIONAL FINISHES

Matt sealer coat – Vuka Super Satin

CURING

At 25C constant, excessive traffic, aqueous contact and exposure to aggressive chemicals should only take place after 7 days when full cure has been achieved. At 10C constant, full cure would take a minimum of 12 days.

STORAGE

12 Months from date of production if stored in original sealed containers in dry conditions at temperatures between +10C and +30C.

HEALTH AND SAFETY

Use of basic principles of industrial hygiene and protective clothing such as gloves, goggles, masks will enable the product to be used safely. Splashes into eyes should be washed immediately with clear water and medical advice sought.

BILL OF QUANTITY DESCRIPTIONS

Contact Vuka Floors for a detailed bill description to suit your specific requirements.

VUKA LUX

MODEL SPECIFICATION

Prepare surface and install Vuka Lux solvent free epoxy at 3mm thickness in strict accordance with the technical data obtainable from Vuka Floors. All work to be done by Vuka Floors approved applicators.

REFERENCE PANEL

A reference sample should be installed by the applicator prior to the start of the contract to ensure correct coverage, workmanship and acceptance by the client and a standard for the project.

FURTHER INFORMATION

This product will change in colour over time. Especially when subject to high levels of UV and or chemical attack. For best colour stability consult our technical department. This does not compromise the products physical and chemical resistance characteristics.

Vuka Floors products are guaranteed against defective materials and manufacture and are sold subject to its Terms and Conditions which may not be overridden in any other legal documentation.

Whilst any information contained herein is true, accurate and represents our best knowledge and experience at the date of issuance it is subject to change without prior notice. User must contact Vuka Floors to verify correctness before specifying or ordering. No warranty is given or implied with any recommendations made by us, our representatives or distributors, as the conditions of use and the competence of any labour involved in the application are beyond our control.

Figures given for consumption / spread rates are theoretical and do not allow for additional materials due to surface profile, porosity, variations in level and wastage etc.